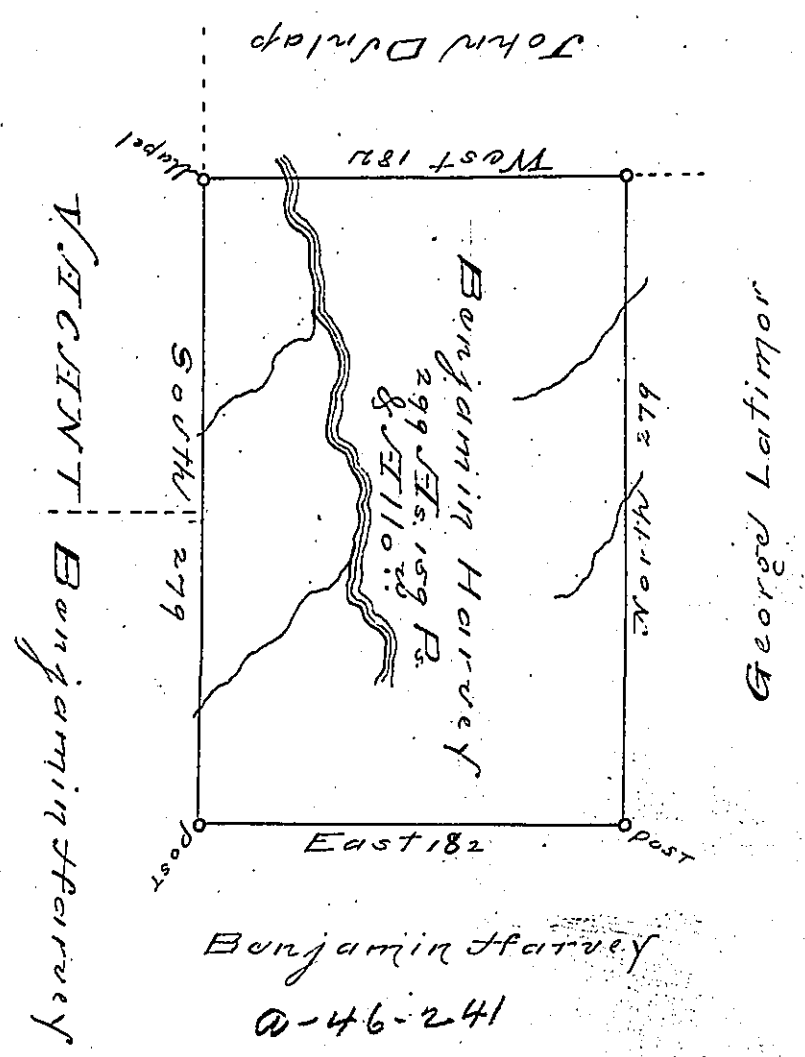


a. 64 .74



The Draught of a Tract of Land Called —
 Situated on the waters of Pine Creek in the late purchase in District Number six in the County of Northumberland, Containing Three Hundred and ninety nine acres and one hundred and fifty nine Perches with the usual allowance of six Feet for Roads.

Surveyed on the 15th Day November Anno Domini 1785 * * * Warrant No 454 granted Benjamin Harvey at Phila * 17th Day of May Anno Domini 1785 for Three Hundred acres.

To
 John Lukens Esq. J. James Latimer Esq.

* obliterated.

IN TESTIMONY that the above is a copy of the original remaining on file in the Department of Internal Affairs of Pennsylvania, made conformably to an Act of Assembly approved the 16th day of February, 1833, I have hereunto set my Hand and caused the Seal of said Department to be affixed at Harrisburg, this

— SIXTH — day of — August — 1895.

James W. Latta
 Secretary of Internal Affairs.